

3 Hours

- Instructions : 1) Use **blue/black** ball point pen only.
2) Do not write anything on the **blank portion of the question paper.**
If written anything, such type of act will be considered as an attempt to resort to unfair means.



Dhiraj

54011

Final M.Sc. Nursing (All Speciality) Examination, Summer 2016
NURSING ADMINISTRATION - I

Total Duration : 3 Hours

Total Marks : 75

- Instructions : 1) Use **blue/black** ball point pen only.
2) **Do not** write anything on the **blank portion of the question paper.**
If written anything, such type of act will be considered as an attempt to resort to unfair means.
3) **All questions are compulsory.**
4) The number to the **right** indicates **full marks.**
5) Draw diagrams wherever necessary.

SECTION - I (38 Marks)

(3+4+5=12)

1. Long Answer question :

Explain Controlling under following heads

- a) Define planning and control. 3
b) Write differences between operational and strategic planning. 4
c) Discuss planning process in health services. 5

(2+4+5=11)

2. Long Answer question :

Explain Leadership under following heads

- a) Define group dynamics. 2
b) Characteristics of effective leadership. 4
c) Explain the types of leadership and their merits and demerits. 5

(3x5=15)

3. Write Short Answers on (any three out of five) :

- a) Staff development programme.
b) Management by objectives.
c) ABC analysis.
d) Effective communication in ward management.
e) Disaster management.

54011

SECTION - II

4. Long answer :

- a) Define group dynamics and leadership.
- b) Characteristics of effective leadership.
- c) Explain the types of leaderships and their merits and demerits.

5. Long answer :

- a) Define budget. Why budget is a tool for effective administration ?
- b) Explain cost effectiveness.

6. Write short answers on (any three) :

- a) Conflict resolution.
- b) Occupational health and safety.
- c) Programme evaluation.
- d) Ethical issues in nursing.
- e) Management by objectives.

(3x5=15)

Use blue/black ball point pen only.

Do not write anything on the blank portion of the question paper.

54011

Final M.Sc. Nursing (Common in All Final M.Sc. Nursing)
Examination, Winter 2012
NURSING ADMINISTRATION - I

Duration : 3 Hours

Total Marks : 75

- Instructions: 1) Use blue/black ball point pen only.
2) Do not write anything on the blank portion of the question paper. If written anything, such type of act will be considered as an attempt to resort to unfair means.
3) All questions are compulsory.
4) The number to the right indicates full marks.
5) Draw diagrams wherever necessary.

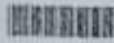
SECTION - I

- | | |
|--|----------|
| 1. Long answer : | 12 |
| a) Define law. <i>4/4/12</i> | 3 |
| b) Explain the ethical principles. <i>4/6</i> | 4 |
| c) Explain the patient care issues and management issues in nursing. <i>4/6/12/12/12</i> | 5 |
| 2. Long answer : | 11 |
| a) Define communication. <i>4/6</i> | 2 |
| b) Explain the communication process. <i>4/6/12/12</i> | 4 |
| c) Explain about public relation. | 5 |
| 3. Write short answers on (any three) : | (2x5=10) |
| a) Strategic planning. <i>5/5</i> | |
| b) National policy on AYUSH. <i>4/5</i> | |
| c) Disaster cycle. | |
| d) Collective bargaining. <i>3/3</i> | |
| e) Measures for infection control. | |

FROM : HUKINS

FRC NO. :

4 Jun. 2013 2:43 PM



Summer-2013 Examination

5401

5. Long answer question.

(4+6=10)

- a) Explain the concept and method of community based rehabilitation.
- b) Discuss role of nurse in rehabilitation of chronic diseases.

4

6

6. Brief answer question (any three out of five) :

(3x5=15)

- a) Epidemiological approaches.
- b) Physiological changes in old age.
- c) Major activities carried out in National AIDS control programme.
- d) Primary prevention for mental illnesses.
- e) Ergonomics and ergonomic solution.

Use **blue/black** ball point pen only.

Do not write anything on the back of the paper.

54011

Final M.Sc. Nursing (Common in All Final M.Sc. Nursing)
Examination, Winter 2012
NURSING ADMINISTRATION - I

Duration : 3 Hours

Total Marks : 75

- Instructions:** 1) Use **blue/black** ball point pen only.
2) **Do not** write anything on the **blank portion of the question paper**. If written anything, such type of act will be considered as an attempt to resort to unfair means.
3) **All** questions are **compulsory**.
4) The number to the **right** indicates **full marks**.
5) **Draw** diagrams **wherever** necessary.

SECTION - I

- | | |
|--|----------|
| 1. Long answer : | 12 |
| a) Define law. 476/475 | 3 |
| b) Explain the ethical principles. 505 | 4 |
| c) Explain the patient care issues and management issues in nursing. 490, 401, 492 | 5 |
| 2. Long answer : | 11 |
| a) Define communication. 120 | 2 |
| b) Explain the communication process. 120, 121 | 4 |
| c) Explain about public relation. | 5 |
| 3. Write short answers on (any three) : | (3×5=15) |
| a) Strategic planning. 50 | |
| b) National policy on AYUSH. 545 | |
| c) Disaster cycle. | |
| d) Collective bargaining. 33 | |
| e) Measures for infection control. | |

P.T.O.



SECTION - II

4. L A Q

- a) Define budget.
- b) What are the types of budget? *any 4*
- c) Explain cost effectiveness and cost accounting *2.5/2.5*

5. L A Q

- a) Explain the legal issues in nursing.
- b) Explain the professional responsibility and accountability *5+3*

6. Brief answer question (any three out of five) :

- a) Programme evaluation and review technique .(PERT)
- b) Current trends and issues in nursing administration.
- c) National population policy.
- d) Condemnation.
- e) Tele nursing.

54011

SECTION - II

4. Long answer :

- a) Define group dynamics and leadership.
- b) Characteristics of effective leadership.
- c) Explain the types of leaderships and their merits and demerits.

5. Long answer :

- a) Define budget. Why budget is a tool for effective administration ?
- b) Explain cost effectiveness.

6. Write short answers on (any three) :

- a) Conflict resolution.
- b) Occupational health and safety.
- c) Programme evaluation.
- d) Ethical issues in nursing.
- e) Management by objectives.

(Mark)

3

4

5

10

4

(3×5=15)



FINAL M.SC. N
THOR
NEUROSC
GASTRO
P

Sc. Nursing Exa
COMMUNITY HEAL

blue/black ball point pen
I write anything on the bla
floor anything

800 121
INTERACT
TOLL-Free

2) Do not write anything on the blank portion of the question paper.



54011

Final M.Sc. Nursing Examination, Summer 2017
NURSING ADMINISTRATION - I

Total Duration : 3 Hours

Total Marks : 75

- Instructions :**
- 1) Use **blue/black** ball point pen only.
 - 2) Do not write anything on the **blank portion of the question paper**. If written anything, such type of act will be considered as an attempt to resort to unfair means.
 - 3) **All questions are compulsory**.
 - 4) The number to the **right** indicates **full marks**.
 - 5) Draw diagrams **wherever** necessary.
 - 6) Distribution of syllabus in Question Paper is only meant to cover entire syllabus within the stipulated frame. The Question paper pattern is a mere guideline. Questions can be asked from any paper's syllabus into any question paper. Students cannot claim that the Question is out of syllabus. As it is only for the placement sake, the distribution has been done.
 - 7) **Use a common answerbook for all sections.**

SECTION - I (38 Marks)

1. Long answer question : (3+4+5=12)
 - a) Define the term Material Management. 3
 - b) Explain the planning of equipments and supplies of an Intensive care unit. 4
 - c) Discuss the methods of Inventory Control in a Hospital. 5
2. Long answer question : (2+4+5=11)
 - a) Define the term Staffing. 2
 - b) Discuss the Recruitment Policy of a Teaching Institution. 4
 - c) Explain the factors influencing the Retention of Staff in a Hospital. 5
3. Short answer question (**any three** out of five) : (3×5=15)
 - a) Principles of Budgeting.
 - b) Decision Making.
 - c) Nursing Audit.
 - d) Legal Issues in Nursing.
 - e) Techniques of Performance Appraisal.

P.T.O.

Use **blue/black** ball point pen only.

Do not write anything on the **blank portion of the question paper**.
If written anything on the blank portion of the question paper, it will be considered as an attempt to resort to unfair means.



54011

FINAL M.Sc. NURSING (MEDICAL SURGICAL NURSING: CARDIO VASCULAR AND THORASIC NURSING, CRITICAL CARE NURSING, ONCOLOGY NURSING, NEUROSCIENCES NURSING, NEPHRO-UROLOGY NURSING, ORTHOPEDIC NURSING, GASTRO-ENTEROLOGY NURSING)(OBSTETRIC AND GYNAECOLOGICAL NURSING, PAEDIATRIC [CHILD HEALTH] NURSING, COMMUNITY HEALTH NURSING, MENTAL [PSYCHIATRIC] HEALTH NURSING), Winter-2013 Examination

NURSING ADMINISTRATION - I

Total Marks : 75

Total Duration : 3 Hours

- Instructions:
- 1) Use **blue/black** ball point pen only.
 - 2) Do not write anything on the **blank portion of the question paper**. If written anything, such type of act will be considered as an attempt to resort to unfair means.
 - 3) All questions are **compulsory**.
 - 4) The number to the **right** indicates **full marks**.
 - 5) Draw diagrams **wherever** necessary.
 - 6) Distribution of syllabus in Question Paper is only meant to cover entire syllabus within the stipulated frame. The Question paper pattern is a mere guideline. Questions can be asked from any paper's syllabus into any question paper. Students cannot claim that the Question is out of syllabus. As it is only for the placement sake, the distribution has been done.
 - 7) Use a common answerbook for all sections.

SECTION - I

38 Marks

(3+4+5=12)

1. L A Q

- a) Define leadership
- b) What are the types of leadership?
- c) Explain the theories of leadership?

3

4

5

(2+4+5=11)

2. L A Q

- a) Define nursing audit.
- b) Explain the audit cycle.
- c) Enumerate the merits demerits of nursing audit.

2

4

5

(3x5=15)

3. Brief answer question (any three out of five)

- a) Group dynamics
- b) Consumer protection act.
- c) Occupational health and safety
- d) ABC analysis.
- e) Management by objectives.

(P.T.O.)

2018



SECTION - I

(Marks 57)

- 1. a) Discuss the causes of increasing mental health problems in India. 3
- b) List the strategies and activities under National Mental Health Programme. 4
- c) Explain the role of a Community Health Nurse in tertiary prevention of mental illness. 12
- 2. a) List the standards in Community Health Nursing. 4
- b) Discuss the steps in organizing an in-service education programme for health workers on communication skills. 12
- 3. Write short notes on any three. (3x5=15)
- a) Health promotion
- b) Benefits under ESI Scheme
- c) Culture studies
- d) Health tourism
- e) Health Policy and its relevance



54015



54015

Final M.Sc. Nursing (Community Health Nursing)
Examination, Summer 2015
COMMUNITY HEALTH NURSING – II

Total Duration : Section A+B = 3 Hours

Total Marks : 75

SECTION – A & SECTION – B

- Instructions :**
- 1) Use **blue/black** ball point pen only.
 - 2) Do not write anything on the **blank portion of the question paper**. If written anything, such type of act will be considered as an attempt to resort to unfair means.
 - 3) **All questions are compulsory.**
 - 4) The number to the **right** indicates **full marks**.
 - 5) Draw diagrams **wherever** necessary.
 - 6) Distribution of syllabus in Question Paper is only meant to cover entire syllabus within the stipulated frame. The Question paper pattern is a mere guideline. Questions can be asked from any paper's syllabus into any question paper. Students cannot claim that the Question is out of syllabus. As it is only for the placement sake, the distribution has been done.
 - 7) **Use a common answer book for all Sections.**

SECTION – A

(38 Marks)

1. Long answer question. (3+4+5=12)
 - a) Explain aging process. 3
 - b) Discuss the various theories of aging. 4
 - c) Discuss the Health problems and needs of elderly. 5
2. Long answer question. (2+4+5=11)
 - a) Define School health. 2
 - b) Discuss the importance of safe school environment. 4
 - c) Role and responsibilities of community health nurse in school health. 5
3. Short answer question (**any three** out of five) : (3x5=15)
 - a) Uses of Epidemiology.
 - b) Trends and issues in community psychiatry.
 - c) Role of ASHA in NRHM.
 - d) Role and responsibilities of Community health nurse in Family Welfare programme.
 - e) Primary Health care.

P.T.O.



Summer-2013 Examination



5401

5. Long Answer Question.

(4+6=10)

- a) Discuss records maintained in relation to patient care
- b) Discuss the scope of computer in nursing management

4

6

6. Brief answer question (any three out of five) :

(3x5=15)

- a) Factors leading to conflict, explain Stress Management.
- b) Effect of Collective bargaining on nursing care practices.
- c) Group dynamics.
- d) Discuss Critical thinking is necessary in decision making.
- e) Legal issues in nursing discuss with example.

175

- 1) Use blue/black ball point pen only.
- 2) Do not write anything on the blank portion of the question paper.



BOMBAY HOSPITAL COLLEGE OF NURSING
MID TERM EXAMINATION
2ND YEAR M.sc NURSING - JUNE 2009
NURSING MANAGEMENT

Q.I) ANSWER ANY TWO

(15 Marks each)

207

- (a) Explain various aspects of planning . advantages & disadvantages, giving examples.
- (b) Human Resource Management has sub-sections. Elaborate on each of them .
- (c) Describe some of the prominent theories of motivation.

Q.II) SHORT NOTES ANY FOUR

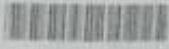
(5 Marks each)

207

- (i) Organisation Structure
- ✓(ii) Delegation
- ✓(iii) Conflict
- ✓(iv) Leadership styles
- (v) Perception
- (vi) Effective Teams
- (vii) Materials Management

28/24
31/24

111040



SECTION - II

4. L A Q

- a) Define budget.
- b) What are the types of budget? *any 2*
- c) Explain cost effectiveness and cost accounting *2.5/2.5*

5. L A Q

- a) Explain the legal issues in nursing.
- b) Explain the professional responsibility and accountability *3+3*

6. Brief answer question (**any three** out of five) :

- a) Programme evaluation and review technique .(PERT)
- b) Current trends and issues in nursing administration.
- c) National population policy.
- d) Condemnation.
- e) Tele nursing.



Summer-2013 Examination



5401

5. Long Answer Question.

(4+6=10)

- a) Discuss records maintained in relation to patient care
- b) Discuss the scope of computer in nursing management

4
6

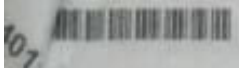
6. Brief answer question (any three out of five) :

(3x5=15)

- a) Factors leading to conflict, explain Stress Management.
- b) Effect of Collective bargaining on nursing care practices.
- c) Group dynamics.
- d) Discuss Critical thinking is necessary in decision making.
- e) Legal issues in nursing discuss with example.

INTERACT A...
121...
Nursing Exam...
ITY HEALTH...
ek ball point pen...
ything on the blam...
thing, such type of act...

Study...
Dist...
Att...
D. V. S.



Final M.Sc. Nursing (Common in All Final M.Sc. Nursing)
Examination, Summer 2012
NURSING ADMINISTRATION – I

Duration : 3 Hours

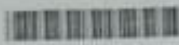
Total Marks : 75

- Instructions:**
- 1) Use **blue/black** ball point pen only.
 - 2) **Do not** write anything on the **blank portion of the question paper**. If written anything, such type of act will be considered as an attempt to resort to unfair means.
 - 3) **All** questions are **compulsory**.
 - 4) The number to the **right** indicates **full** marks.
 - 5) **Draw** diagrams **wherever** necessary.

SECTION – I

1. **Long answers :** **(3+4+5=12)**
 - a) Describe the concept of nursing management. 3
 - b) Enlist the principles of nursing management. 4
 - c) Discuss the current trends and issues in nursing administration. 5
2. **Long answers :** **(2+4+5=11)**
 - a) Define planning and control. 2
 - b) Write any three difference between operational and strategic planning. 4
 - c) Explain the planning process in health services. 5
3. **Write short answers (any three out of five) :** **(3×5=15)**
 - a) Decision making model
 - b) Staff development programme
 - c) Organizational structure
 - d) PERT
 - e) Collective bargaining.

P.T.O.



54015

Final M.Sc. Nursing (Community Health Nursing)
Examination, Winter 2011
COMMUNITY HEALTH NURSING - II

Duration : 3 Hours

Total Marks : 75

- Instructions:*
- 1) Use blue/black ball point pen only.
 - 2) Do not write anything on the blank portion of the question paper. If written anything, such type of act will be considered as an attempt to resort to unfair means.
 - 3) All questions are compulsory.
 - 4) The number to the right indicates full marks.
 - 5) Draw diagrams wherever necessary.

SECTION - I

1. Long answer question : (3+4+5=12)
 - a) Define reproductive health according to WHO (World Health Organization). 3
 - b) Explain various services provided under reproductive and child health programme. 4
 - c) Discuss the role and responsibilities of community health nurse in reducing maternal mortality and morbidity. 5
2. Long answer question : (2+4+5=11)
 - a) Define quality assurance. 2
 - b) Describe the functions of ASHA (Accredited Social Health Activist). 4
 - c) Discuss the role and responsibilities of community health nurse in material management at community health center. 5
3. Write short answers (any three out of five) : (3×5=15)
 - a) Case control studies
 - b) Rehabilitation and role of voluntary agencies
 - c) Major activities of national programme for control of blindness
 - d) Functions of WHO (World Health Organization)
 - e) Emergency contraception.

P.T.O.



54015

**Final M.Sc. Nursing Examination, Summer 2017
COMMUNITY HEALTH NURSING - II**

Total Duration : 3 Hours

Total Marks : 75

- Instructions :**
- 1) Use **blue/black** ball point pen only.
 - 2) Do not write anything on the **blank portion of the question paper**. If written anything, such type of act will be considered as an attempt to resort to unfair means.
 - 3) **All questions are compulsory.**
 - 4) The number to the **right** indicates **full marks**.
 - 5) Draw diagrams **wherever** necessary.
 - 6) Distribution of syllabus in Question Paper is only meant to cover entire syllabus within the stipulated frame. The Question paper pattern is a mere guideline. Questions can be asked from any paper's syllabus into any question paper. Students cannot claim that the Question is out of syllabus. As it is only for the placement sake, the distribution has been done.
 - 7) **Use a common answerbook for all sections.**

SECTION - I (38 Marks)

1. Long answer question : (3+4+5=12)
 - a) Define Epidemiology. 3
 - b) What are the emerging and re-emerging diseases ? 4
 - c) Discuss the role of a community health nurse in investigation of an epidemic. 5
2. Long answer question : (2+4+5=11)
 - a) Describe the aging process and the changes in geriatrics. 2
 - b) Enumerate the myths and facts of aging. 4
 - c) Explain about elderly abuse. 5
3. Short answer question (any three out of five) : (3x5=15)
 - a) National Integrated Disease Surveillance Program.
 - b) Global burden of disease.
 - c) Public relations.
 - d) Community based rehabilitation.
 - e) Health information system.

P.T.O.

Time	Purpose
10:00	Shoes
11:00	Study
12:00	Study
1:00	Study
2:00	Study
3:00	Study
4:00	Study
5:00	Study
6:00	Study
7:00	Study
8:00	Study
9:00	Study
10:00	Study
11:00	Study
12:00	Study
1:00	Study
2:00	Study
3:00	Study
4:00	Study
5:00	Study
6:00	Study
7:00	Study
8:00	Study
9:00	Study
10:00	Study
11:00	Study
12:00	Study
1:00	Study
2:00	Study
3:00	Study
4:00	Study
5:00	Study
6:00	Study
7:00	Study
8:00	Study
9:00	Study
10:00	Study
11:00	Study
12:00	Study
1:00	Study
2:00	Study
3:00	Study
4:00	Study
5:00	Study
6:00	Study
7:00	Study
8:00	Study
9:00	Study
10:00	Study
11:00	Study
12:00	Study
1:00	Study
2:00	Study
3:00	Study
4:00	Study
5:00	Study
6:00	Study
7:00	Study
8:00	Study
9:00	Study
10:00	Study
11:00	Study
12:00	Study
1:00	Study
2:00	Study
3:00	Study
4:00	Study
5:00	Study
6:00	Study
7:00	Study
8:00	Study
9:00	Study
10:00	Study
11:00	Study
12:00	Study
1:00	Study
2:00	Study
3:00	Study
4:00	Study
5:00	Study
6:00	Study
7:00	Study
8:00	Study
9:00	Study
10:00	Study
11:00	Study
12:00	Study
1:00	Study
2:00	Study
3:00	Study
4:00	Study
5:00	Study
6:00	Study
7:00	Study
8:00	Study
9:00	Study
10:00	Study
11:00	Study
12:00	Study
1:00	Study
2:00	Study
3:00	Study
4:00	Study
5:00	Study
6:00	Study
7:00	Study
8:00	Study
9:00	Study
10:00	Study
11:00	Study
12:00	Study
1:00	Study
2:00	Study
3:00	Study
4:00	Study
5:00	Study
6:00	Study
7:00	Study
8:00	Study
9:00	Study
10:00	Study
11:00	Study
12:00	Study
1:00	Study
2:00	Study
3:00	Study
4:00	Study
5:00	Study
6:00	Study
7:00	Study
8:00	Study
9:00	Study
10:00	Study
11:00	Study
12:00	Study
1:00	Study
2:00	Study
3:00	Study
4:00	Study
5:00	Study
6:00	Study
7:00	Study
8:00	Study
9:00	Study
10:00	Study
11:00	Study
12:00	Study
1:00	Study
2:00	Study
3:00	Study
4:00	Study
5:00	Study
6:00	Study
7:00	Study
8:00	Study
9:00	Study
10:00	Study
11:00	Study
12:00	Study
1:00	Study
2:00	Study
3:00	Study
4:00	Study
5:00	Study
6:00	Study
7:00	Study
8:00	Study
9:00	Study
10:00	Study
11:00	Study
12:00	Study
1:00	Study
2:00	Study
3:00	Study
4:00	Study
5:00	Study
6:00	Study
7:00	Study
8:00	Study
9:00	Study
10:00	Study
11:00	Study
12:00	Study
1:00	Study
2:00	Study
3:00	Study
4:00	Study
5:00	Study
6:00	Study
7:00	Study
8:00	Study
9:00	Study
10:00	Study
11:00	Study
12:00	Study
1:00	Study
2:00	Study
3:00	Study
4:00	Study
5:00	Study
6:00	Study
7:00	Study
8:00	Study
9:00	Study
10:00	Study
11:00	Study
12:00	Study
1:00	Study
2:00	Study
3:00	Study
4:00	Study
5:00	Study
6:00	Study
7:00	Study
8:00	Study
9:00	Study
10:00	Study
11:00	Study
12:00	Study
1:00	Study
2:00	Study
3:00	Study
4:00	Study
5:00	Study
6:00	Study
7:00	Study
8:00	Study
9:00	Study
10:00	Study
11:00	Study
12:00	Study
1:00	Study
2:00	Study
3:00	Study
4:00	Study
5:00	Study
6:00	Study
7:00	Study
8:00	Study
9:00	Study
10:00	Study
11:00	Study
12:00	Study
1:00	Study
2:00	Study
3:00	Study
4:00	Study
5:00	Study
6:00	Study
7:00	Study
8:00	Study
9:00	Study
10:00	Study
11:00	Study
12:00	Study
1:00	Study
2:00	Study
3:00	Study
4:00	Study
5:00	Study
6:00	Study
7:00	Study
8:00	Study
9:00	Study
10:00	Study
11:00	Study
12:00	Study
1:00	Study
2:00	Study
3:00	Study
4:00	Study
5:00	Study
6:00	Study
7:00	Study
8:00	Study
9:00	Study
10:00	Study
11:00	Study
12:00	Study
1:00	Study
2:00	Study
3:00	Study
4:00	Study
5:00	Study
6:00	Study
7:00	Study
8:00	Study
9:00	Study
10:00	Study
11:00	Study
12:00	Study
1:00	Study
2:00	Study
3:00	Study
4:00	Study
5:00	Study
6:00	Study
7:00	Study
8:00	Study
9:00	Study
10:00	Study
11:00	Study
12:00	Study
1:00	Study
2:00	Study
3:00	Study
4:00	Study
5:00	Study
6:00	Study
7:00	Study
8:00	Study
9:00	Study
10:00	Study
11:00	Study
12:00	Study
1:00	Study
2:00	Study
3:00	Study
4:00	Study
5:00	Study
6:00	Study
7:00	Study
8:00	Study
9:00	Study
10:00	Study
11:00	Study
12:00	Study
1:00	Study
2:00	Study
3:00	Study
4:00	Study
5:00	Study
6:00	Study
7:00	Study
8:00	Study
9:00	Study
10:00	Study
11:00	Study
12:00	Study
1:00	Study
2:00	Study
3:00	Study
4:00	Study
5:00	Study
6:00	Study
7:00	Study
8:00	Study
9:00	Study
10:00	Study
11:00	Study
12:00	Study
1:00	Study
2:00	Study
3:00	Study
4:00	Study
5:00	Study
6:00	Study
7:00	Study
8:00	Study
9:00	Study
10:00	Study
11:00	Study
12:00	Study
1:00	Study
2:00	Study
3:00	Study
4:00	Study
5:00	Study
6:00	Study
7:00	Study
8:00	Study
9:00	Study
10:00	Study
11:00	Study
12:00	Study
1:00	Study
2:00	Study
3:00	Study
4:00	Study
5:00	Study
6:00	Study
7:00	Study
8:00	Study
9:00	Study
10:00	Study
11:00	Study
12:00	Study
1:00	Study
2:00	Study
3:00	Study
4:00	Study
5:00	Study
6:00	Study
7:00	Study
8:00	Study
9:00	Study
10:00	Study
11:00	Study
12:00	Study
1:00	Study
2:00	Study
3:00	Study
4:00	Study
5:00	Study
6:00	Study
7:00	Study
8:00	Study
9:00	Study
10:00	Study
11:00	Study
12:00	Study
1:00	Study
2:00	Study
3:00	Study
4:00	Study
5:00	Study
6:00	Study
7:00	Study
8:00	Study
9:00	Study
10:00	Study
11:00	Study
12:00	Study
1:00	Study
2:00	Study
3:00	Study
4:00	Study
5:00	Study
6:00	Study
7:00	Study
8:00	Study
9:00	Study
10:00	Study
11:00	Study
12:00	Study
1:00	Study
2:00	Study
3:00	Study
4:00	Study
5:00	Study
6:00	Study
7:00	Study
8:00	Study
9:00	Study
10:00	Study
11:00	Study
12:00	Study
1:00	Study
2:00	Study
3:00	Study
4:00	Study
5:00	Study
6:00	Study
7:00	Study
8:00	Study
9:00	Study
10:00	Study
11:00	Study
12:00	Study
1:00	Study
2:00	Study
3:00	Study
4:00	Study
5:00	Study
6:00	Study

Use black ball point pen only.



54011

Final M.Sc. Nursing (Common in all Final M.Sc. Nursing)
 Examination, Winter 2011
 NURSING ADMINISTRATION - I

Duration : 3 Hours

Total Marks : 75

- Instructions:*
- 1) Use blue/black ball point pen only.
 - 2) Do not write anything on the blank portion of the question paper. If written anything, such type of act will be considered as an attempt to resort to unfair means.
 - 3) All questions are compulsory.
 - 4) The number to the right indicates full marks.
 - 5) Draw diagrams wherever necessary.

SECTION - I

1. Long answers : (3+4+5=12)
 - a) Enumerate the theories of organization. 3
 - b) List the principles of organization. 4
 - c) Describe the role and functions of administrator in organizational structure. 5
2. Long answers : (2+4+5=11)
 - a) Define staffing. 2
 - b) Describe the methods of recruitment by health agencies. 4
 - c) Explain the factors influencing staffing requirements in the nursing service unit. 5
3. Write short answers (any three out of five) : (3×5=15)
 - a) Decision strategies
 - b) Gantt chart
 - c) Functions of administration
 - d) Primary nursing
 - e) Creating motivating climate.

P.T.O.



54011

Final M.Sc. Nursing Examination, November/December 2009
NURSING ADMINISTRATION - I

Duration: 3 Hours

Total Marks: 75

- Instructions :*
- 1) Use blue/black ball point pen only.
 - 2) Do not write anything on the blank portion of the question paper. If written anything, such type of act will be considered as an attempt to resort to unfair means.
 - 3) All questions are compulsory.
 - 4) The number to the right indicates full marks.
 - 5) Draw diagrams wherever necessary.

SECTION - I

(Marks 38)

1. Long answer :

12

a) Define supervision.

3

b) What are the factors essential for good supervision ?

4

c) Enumerate principles of good supervision.

5

2. Long answer :

11

a) Define quality assurance.

2

b) Explain the importance of quality assurance in the field of health care.

4

c) "Quality assurance helps to improve nursing care." Explain.

5

3. Write short answers on (any three) :

(3x5=15)

a) Cost effectiveness.

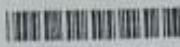
b) Selection procedure of the staff nurses.

c) Legal aspects in nursing practice.

d) Cost analysis and cost benefit.

e) Performance appraisal.

P.T.O.



54015

**Final M.Sc. Nursing (Community Health Nursing)
Examination, Winter 2011
COMMUNITY HEALTH NURSING – II**

Duration : 3 Hours

Total Marks : 75

- Instructions:**
- 1) Use blue/black ball point pen only.
 - 2) Do not write anything on the blank portion of the question paper. If written anything, such type of act will be considered as an attempt to resort to unfair means.
 - 3) All questions are compulsory.
 - 4) The number to the right indicates full marks.
 - 5) Draw diagrams wherever necessary.

SECTION – I

1. Long answer question : (3+4+5=12)
 - a) Define reproductive health according to WHO (World Health Organization). 3
 - b) Explain various services provided under reproductive and child health programme. 4
 - c) Discuss the role and responsibilities of community health nurse in reducing maternal mortality and morbidity. 5
2. Long answer question : (2+4+5=11)
 - a) Define quality assurance. 2
 - b) Describe the functions of ASHA (Accredited Social Health Activist). 4
 - c) Discuss the role and responsibilities of community health nurse in material management at community health center. 5
3. Write short answers (any three out of five) : (3×5=15)
 - a) Case control studies
 - b) Rehabilitation and role of voluntary agencies
 - c) Major activities of national programme for control of blindness
 - d) Functions of WHO (World Health Organization)
 - e) Emergency contraception.

P.T.O.

54015



SECTION - B

(37 Marks)

4. Long answer question. (3+4+5=12)
 - a) Enlist National health programs. 3
 - b) Explain strategies for prevention and control of malaria. 4
 - c) Explain modified plan of operation in national malaria control programme. 5
5. Long answer question. (4+6=10)
 - a) Explain occupational hazards. 4
 - b) Measures for prevention and control of occupational diseases. 6
6. Short answer question (**any three** out of five) : (3x5=15)
 - a) Disaster triage.
 - b) Models of Rehabilitation.
 - c) World health organization.
 - d) Sentinel surveillance.
 - e) Act on prevention of Food Adulteration.



84018

FINAL M.B.C. NURSING (COMMUNITY HEALTH NURSING), Winter-2013 Examination
COMMUNITY HEALTH NURSING - II

Total Duration - 3 Hours

Total Marks - 75

Instructions: 1) Use blue/black ball point pen only.

- 2) Do not write anything on the blank portion of the question paper. If written anything, such type of act will be considered as an attempt to resort to unfair means.
- 3) All questions are compulsory.
- 4) The number to the right indicates full marks.
- 5) Draw diagrams wherever necessary.
- 6) Distribution of syllabus in Question Paper is only meant to cover entire syllabus within the stipulated frame. The Question paper pattern is a mere guideline. Questions can be asked from any paper's syllabus into any question paper. Students cannot claim that the Question is out of syllabus. As it is only for the placement sake, the distribution has been done.
- 7) Use a common answerbook for all sections.

SECTION - I

30 Marks

(3x4+5=12)

1. L.A.Q.

- a) Write the concept of epidemiological triad. 3
- b) State the advantages of using epidemiology in community health nursing practice. 4
- c) List down the measurements and explain the basic tools of measurement in epidemiology. 5

2. L.A.Q.

(2x4+5=11)

- a) Write the objectives of school health programme. 2
- b) Explain the dimensions of health assessments carried out for adolescent under school health programme. 4
- c) Describe the role of community in disaster preparedness. 5

3. Brief answer question (any three out of five)

(3x5=15)

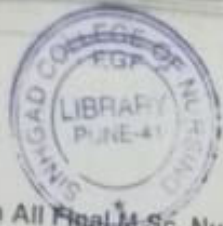
- a) World health organization (W.H.O.)
- b) National AIDS prevention & control policy
- c) National rural health mission.
- d) Sources of health information
- e) Levels of prevention

(P.T.O.)



M.Sc. Nursing Examination, S...
COMMUNITY HEALTH M...

54011



(37 Marks)
(3+4+5=12)

M.Sc. Nursing, (Common in All Final M.Sc. Nursing) Summer-2014 Examination
NURSING ADMINISTRATION - I

54011

Duration : 3 Hours

Total Marks : 75

5
4
3

- Instructions:
- 1) Use blue/black ball point pen only.
 - 2) Do not write anything on the blank portion of the question paper. If written anything, such type of act will be considered as an attempt to resort to unfair means.
 - 3) All questions are compulsory.
 - 4) The number to the right indicates full marks.
 - 5) Draw diagrams wherever necessary.
 - 6) Distribution of syllabus in Question Paper is only meant to cover entire syllabus within the stipulated frame. The Question paper pattern is a mere guideline. Questions can be asked from any paper's syllabus into any question paper. Students cannot claim that the Question is out of syllabus. As it is only for the placement sake, the distribution has been done.
 - 7) Use a common answerbook for all sections.

SECTION - I

- | | |
|---|------------|
| 1. Long answer- | 38 Marks |
| a) Define supervision | (3+4+5=12) |
| b) What are the factors essential for good supervision? | 3 |
| c) What principles you will use and how for good supervision? | 4 |
| 2. Long answer- | 5 |
| a) Define staffing | (2+4+5=11) |
| b) Describe the methods of recruitment for nursing personnel. | 2 |
| c) Plan staffing for a 100 beded superspeciality hospital. | 4 |
| 3. Brief answer question (any three out of five) : | 5 |
| a) Performance appraisal | (3x5=15) |
| b) Areas of Collective bargaining in nursing | |
| c) Primary nursing | |
| d) Styles of leadership | |
| e) Elements of Material management | |

(P.T.O.)

54015



SECTION - II

4. Long answer question : (3+4+5=12)
- a) Enlist the objectives of occupational health nursing. 3
 - b) Discuss the benefits under Employee State Insurance Act. 4
 - c) Discuss the role and responsibilities of community health nurse in promoting occupational health and safety. 5
5. Long answer question : (4+6=10)
- a) Explain the need and importance of adolescence health. 4
 - b) Discuss role of parents in promoting adolescence health. 6
6. Write short answers (any three out of five) : (3×5=15)
- a) Components of school health services
 - b) Problems of elderly and nurses role
 - c) Disaster preparedness
 - d) International health issues and problems
 - e) Human rights of mentally ill.

54011

SECTION - II

4. Long answer :

- a) Define administration. 1919
- b) What are the principles and scope administration? 27
- c) Explain the organization and functions of nursing services and education at national level 544

12
3
4
5

5. Long answer :

- a) Explain the types and theories of organization. 69
- b) Explain the measures for organizing nursing services and patient care. 557

10
4
6

6. Write short answers on (any three) :

(3x5=15)

- a) NAAC
- ✓ b) Nursing regulatory mechanisms. 675
- c) Health economics. 617/618
- d) Use of computers in hospital and community.
- ✓ e) Stress management.

54011

SECTION - II

4. Long answers :
- a) Define quality assurance and quality control. (3+4+5=12) 3
 - b) Enlist the standards in quality assurance. 4
 - c) Explain the nursing audit in detail. 5
5. Long answers :
- a) Mention the principles of budget. (4+6=10) 4
 - b) Describe the role of nurse administrator in budgeting for a hospital of 500 beds. 6
6. Write short answers (any three out of five) : (3x5=15)
- a) Delegation errors
 - b) ABC analysis in material management
 - c) Cost effectiveness
 - d) Inventory control
 - e) Patient's rights.

3 Hours

- Instructions :
- 1) Use **blue/black** ball point pen only.
 - 2) Do not write anything on the **blank portion of the question paper.** If written anything, such type of act will be considered as an attempt to resort to unfair means.



Dhiraj
54011

Final M.Sc. Nursing (All Speciality) Examination, Summer 2016
NURSING ADMINISTRATION - I

Total Duration : 3 Hours

Total Marks : 75

- Instructions :
- 1) Use **blue/black** ball point pen only.
 - 2) **Do not** write anything on the **blank portion of the question paper.** If written anything, such type of act will be considered as an attempt to resort to unfair means.
 - 3) **All questions are compulsory.**
 - 4) The number to the **right** indicates **full marks.**
 - 5) Draw diagrams wherever necessary.

SECTION - I (38 Marks)

1. Long Answer question : (3+4+5=12)
 Explain Controlling under following heads
 - a) Define planning and control. 3
 - b) Write differences between operational and strategic planning. 4
 - c) Discuss planning process in health services. 5

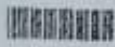
2. Long Answer question : (2+4+5=11)
 Explain Leadership under following heads
 - a) Define group dynamics. 2
 - b) Characteristics of effective leadership. 4
 - c) Explain the types of leadership and their merits and demerits. 5

3. Write Short Answers on (**any three** out of five) : (3x5=15)
 - a) Staff development programme.
 - b) Management by objectives.
 - c) ABC analysis.
 - d) Effective communication in ward management.
 - e) Disaster management.

FROM : MUHSNR

FAK NO. :

4 Jun. 2013 2:43PM



Summer-2013 Examination

5401

5. Long answer question.

(4+6=10)

- Explain the concept and method of community based rehabilitation.
- Discuss role of nurse in rehabilitation of chronic diseases.

4

6

6. Brief answer question (any three out of five) :

(3x5=15)

- Epidemiological approaches.
- Physiological changes in old age.
- Major activities carried out in National AIDS control programme.
- Primary prevention for mental illnesses.
- Ergonomics and ergonomic solution.



54011

**Final M.Sc. Nursing Examination, Summer 2017
NURSING ADMINISTRATION – I**

Duration : 3 Hours

Total Marks : 75

- Instructions :**
- 1) Use **blue/black** ball point pen only.
 - 2) Do not write anything on the **blank portion of the question paper**. If written anything, such type of act will be considered as an attempt to resort to unfair means.
 - 3) **All** questions are **compulsory**.
 - 4) The number to the **right** indicates **full** marks.
 - 5) Draw diagrams **wherever** necessary.
 - 6) Distribution of syllabus in Question Paper is only meant to cover entire syllabus within the stipulated frame. The Question paper pattern is a mere guideline. Questions can be asked from any paper's syllabus into any question paper. Students cannot claim that the Question is out of syllabus. As it is only for the placement sake, the distribution has been done.
 - 7) **Use** a common answerbook for **all** sections.

SECTION – I (38 Marks)

1. Long answer question : (3+4+5=12)
 - a) Define the term Material Management. 3
 - b) Explain the planning of equipments and supplies of an Intensive care unit. 4
 - c) Discuss the methods of Inventory Control in a Hospital. 5
2. Long answer question : (2+4+5=11)
 - a) Define the term Staffing. 2
 - b) Discuss the Recruitment Policy of a Teaching Institution. 4
 - c) Explain the factors influencing the Retention of Staff in a Hospital. 5
3. Short answer question (any three out of five) : (3x5=15)
 - a) Principles of Budgeting.
 - b) Decision Making.
 - c) Nursing Audit.
 - d) Legal Issues in Nursing.
 - e) Techniques of Performance Appraisal.

P.T.O.

Use ball point pen only.



54011

Final M.Sc. Nursing (Common in all Final M.Sc. Nursing) Examination,
Summer 2015
NURSING ADMINISTRATION - I

Total Duration : Section A+B = 3 Hours

Total Marks : 75

SECTION - A & SECTION - B

- Instructions :**
- 1) Use **blue/black** ball point pen only.
 - 2) Do not write anything on the **blank portion of the question paper**. If written anything, such type of act will be considered as an attempt to resort to unfair means.
 - 3) **All questions are compulsory.**
 - 4) The number to the **right** indicates **full marks**.
 - 5) Draw **diagrams wherever necessary**.
 - 6) Distribution of syllabus in Question Paper is only meant to cover entire syllabus within the stipulated frame. The Question paper pattern is a mere guideline. Questions can be asked from any paper's syllabus into any question paper. Students cannot claim that the Question is out of syllabus. As it is only for the placement sake, the distribution has been done.
 - 7) **Use a common answer book for all Sections.**

SECTION - A

(38 Marks)

1. Long answer question.
 - a) Define law and battery. 3
 - b) Explain the ethical principles in nursing. 4
 - c) Explain the current trends and issues in nursing administration. 5
2. Long answer question.
 - a) Define the terms planning and control. 2
 - b) Write the difference between operational and strategic planning. 4
 - c) Discuss national policy on AYUSH. 5
3. Short answer question (**any three** out of five) : (3x5=15)
 - a) Staff development programme
 - b) NAAC/ NAHB
 - c) Health economics
 - d) Decision making model
 - e) Conflict management.

P.T.O.



B.S. Nursing, (Common in All Post B.Sc. Nursing) Summer-2014 Examination
NURSING ADMINISTRATION - I

54015

Duration : 3 Hours

Total Marks : 75

- Instructions:
- 1) Use blue/black ball point pen only
 - 2) Do not write anything on the blank portion of the question paper. If written anything, such type of act will be considered as an attempt to resort to unfair means.
 - 3) All questions are compulsory.
 - 4) The number to the right indicates full marks.
 - 5) Draw diagrams wherever necessary.
 - 6) Distribution of syllabus in Question Paper is only meant to cover entire syllabus within the stipulated frame. The Question paper pattern is a mere guideline. Questions can be asked from any paper's syllabus into any question paper. Students cannot claim that the Question is out of syllabus. As it is only for the placement sake, the distribution has been done.
 - 7) Use a common answerbook for all sections.

SECTION - I

- | | |
|---|------------|
| 1. Long answer- | 30 Marks |
| a) Define supervision | (3+4+5=12) |
| b) What are the factors essential for good supervision? | 3 |
| c) What principles you will use and how for good supervision? | 4 |
| 2. Long answer- | 5 |
| a) Define staffing | (2+4+5=11) |
| b) Describe the methods of recruitment for nursing personnel. | 2 |
| c) Plan staffing for a 100 bedded superspeciality hospital. | 4 |
| 3. Brief answer question (any three out of five) | 5 |
| a) Performance appraisal | (3x5=15) |
| b) Areas of Collective bargaining in nursing | |
| c) Primary nursing | |
| d) Styles of leadership | |
| e) Elements of Material management | |

(P.T.O.)



Final M.Sc. Nursing Examination, 2019
MATH NURS



54011

SECTION - II

37 Marks

4. Long answer-

(3+4+5=12)

- a) Define law 3
- b) Explain the ethical principles used in nursing. 4
- c) Explain the issues in practice, education & administration in nursing 5

5. Long answer-

(4+6=10)

- a) Define budget. Enumerate are the types of Budget? 4
- b) Explain budget of college of nursing. 6

6. Brief answer question (any three out of five) :

(3x5=15)

- a) Management by objectives
- b) Quality assurance in nursing
- c) Group dynamics
- d) Health care delivery system in India
- e) Computers in nursing education

54011

SECTION - II (37 Marks)

4. Long Answer question :

Explain human resources for health under following heading :

- a) Define human resource management. 3
- b) Discuss the recruitment process in nursing services of a multi speciality hospital. 4
- c) What are the quality assurance programmes used in the selection of staff nurses in a hospital ? 5

(3+4+5=12)

5. Long Answer question :

Explain material management under following heads

- a) Discuss briefly the elements of material management.
- b) Discuss the methods of inventory control in a hospital.

(4+6=10)

6. Write Short Answers on (any three out of five) :

- a) Methods of performance appraisal.
- b) Patient's rights.
- c) Infection control measures in ICU.
- d) Primary Nursing.
- e) Ethical issues in nursing.

(3x5=15)



Examination, Summer 2017
HEALTH NURSING - II

Total Marks

only.
Mark portion of the question
act will be



Final M.S.



Summer-2013 Examination
Final M.Sc. Nursing (Community Health Nursing)
COMMUNITY HEALTH NURSING - II

54015

Duration: 3 Hours

Total Marks: 75

- Instruction
- 1) Use blue/black ball point pen only.
 - 2) Do not write anything on the blank portion of the question paper. If written anything, such type of act will be considered as an attempt to resort to unfair means.
 - 3) All questions are compulsory.
 - 4) The number to the right indicates full marks.
 - 5) Draw diagrams wherever necessary.

SECTION - I

36 Marks

1. Long answer question. (3+4+5=12)
 - a) Define family planning and state the aims of family planning services. 3
 - b) Target free approach - an effective strategy of population control, - Comment on it. 4
 - c) Discuss the role and responsibilities of distric public health nurse in family welfared programme. 5
2. Long answer question. (2+4+5=11)
 - a) What is meant by term school health services. 2
 - b) Explain the need and importance of school health services. 4
 - c) Discuss the steps of organizing school health program in rural - area. 5
3. Brief answer question (any three out of five) : (3x5=15)
 - a) Referral chain of community out reach services.
 - b) Indian factory act
 - c) Food adulteration.
 - d) Contribution of UNICEF in Indian health care.
 - e) Crisis intervention.

SECTION - II

37 Marks

4. Long answer question. (3+4+5=12)
 - a) Briefly explain disaster mitigation. 3
 - b) Describe importance of triage and ethical aspect related to triage. 4
 - c) Discuss the role of nurse in disaster preparedness. 5

(P.T.O.)

Dhishaj Salve



54015

Final Year M.Sc. Nursing Examination, Summer 2016
COMMUNITY HEALTH NURSING – II

Total Duration : 3 Hours

Total Marks : 75

- Instructions :**
- 1) Use **blue/black** ball point pen only.
 - 2) Do not write anything on the **blank portion of the question paper**. If written anything, such type of act will be considered as an attempt to resort to unfair means.
 - 3) **All questions are compulsory.**
 - 4) The number to the **right** indicates **full marks**.
 - 5) Draw diagrams **wherever** necessary.

SECTION – I (38 Marks)

1. Long Answer Question : (3+4+5=12)
 - a) List out the objectives of school health. 3
 - b) Discuss the safe school environment. 4
 - c) Enumerate the roles and responsibilities of community health nurse. 5
2. Long Answer Question : (2+4+5=11)
 - a) Describe the concept of reproductive and child health concept. 2
 - b) Briefly explain about first phase. 4
 - c) State the new initiatives of second phase. 5
3. Write Short Answer on (**any three** out of five) : (3×5=15)
 - a) Disaster management.
 - b) Adolescent health.
 - c) Approaches of epidemiology.
 - d) ESI-Scheme.
 - e) World health assembly.

P.T.O.

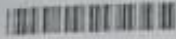
Handwritten notes at the bottom of the page, including a table with columns for 'Time' and 'Study'.

54011

SECTION - II (37 Marks)

4. Long answer question : (3+4)
- a) Define the terms Management and Administration.
 - b) Enlist the Principles of Nursing Administration.
 - c) Discuss the current trends and issues in Nursing Administration.
5. Long answer question : (4+6)
- a) Discuss the methods of Patient assignment.
 - b) Explain the organisation of linen and laundry services in a tertiary care hospital.
6. Short answer question (any three out of five) : (3×5=)
- a) Collective Bargaining.
 - b) Occupational health.
 - c) Motivational theories.
 - d) Standard Safety Measures.
 - e) Electronic Medical Records and Tele-nursing.

Use blue/black ball point pen only.



54011

Final M.Sc. Nursing (Common in all Final M.Sc. Nursing)
Examination, Winter 2011
NURSING ADMINISTRATION - I

Duration : 3 Hours

Total Marks : 75

- Instructions:*
- 1) Use blue/black ball point pen only.
 - 2) Do not write anything on the blank portion of the question paper. If written anything, such type of act will be considered as an attempt to resort to unfair means.
 - 3) All questions are compulsory.
 - 4) The number to the right indicates full marks.
 - 5) Draw diagrams wherever necessary.

SECTION - I

1. Long answers : (3+4+5=12)
 - a) Enumerate the theories of organization. 3
 - b) List the principles of organization. 4
 - c) Describe the role and functions of administrator in organizational structure. 5
2. Long answers : (2+4+5=11)
 - a) Define staffing. 2
 - b) Describe the methods of recruitment by health agencies. 4
 - c) Explain the factors influencing staffing requirements in the nursing service unit. 5
3. Write short answers (any three out of five) : (3×5=15)
 - a) Decision strategies
 - b) Gantt chart
 - c) Functions of administration
 - d) Primary nursing
 - e) Creating motivating climate.

P.T.O.



54015

37 Marks

SECTION - II

(3+4+5=12)

4. L A Q

- a) Define nursing standards. 3
- b) Discuss in detail about nursing audit. 4
- c) Explain the role and responsibilities of nurse in maintaining quality assurance in community health nursing practice. 5

(4+6=10)

5. L A Q

- a) Define rehabilitation & write the types of rehabilitation 4
- b) Discuss the community based rehabilitation and the role of community health nurse. 6

(3x5=15)

6. Brief answer question (any three out of five) :

- a) Home visits
- b) Women and occupational health
- c) National mental health Programme
- d) Components of Reproductive and child health(RCH)
- e) First referral unit (F R U)

54011

SECTION - II

4. Long answers :

- a) Define law and mention the types of law.
- b) Describe the values of law in nursing.
- c) Explain the legal issues in nursing.

(3+4+5=12)

5. Long answers :

- a) Explain the process of material management.
- b) Describe the methods of cost effective analysis.

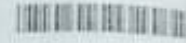
(4+6=10)

6. Write short answers (any three out of five) :

- a) Tool for performance appraisal
- b) Nurses responsibility in record keeping and reporting
- c) Skill and qualities of effective leadership in nursing
- d) Principles of supervision
- e) Group dynamics.

(3×5=15)

54015



SECTION - II

(Marks 37)

4. a) Discuss the causes of increasing mental health problems in India. 3
b) List the strategies and activities under National Mental Health Programme. 4
c) Explain the role of a Community Health Nurse in tertiary prevention of mental illness. 5
12
5. a) List the standards in Community Health Nursing. 4
b) Discuss the steps in organising an inservice education programme for health workers on communication skills. 6
10
6. Write short answer on (any three) : (3×5=15)
a) Health promotion
b) Benefits under ESI Scheme
c) Cohort studies
d) Health tourism
e) Health Policy and its relevance.

54015



SECTION – II (37 Marks)

4. Long answer question : (3+4+5=12)
- a) Describe the aims and objectives of occupational health. 3
 - b) Enumerate the occupational hazards of industrial workers. 4
 - c) Explain the role of nurse in occupational health. 5
5. Long answer question : (4+6=10)
- a) Describe the adolescent health. 4
 - b) Discuss the disaster preparedness and management in school. 6
6. Short answer question (any three out of five) : (3x5=15)
- a) ESI scheme.
 - b) International health issue and problem.
 - c) Human Rights of mentally ill.
 - d) Psycho social rehabilitation.
 - e) Ergonomics.



54015

Final M.Sc. Nursing (Community Health Nursing) Examination,
May/June 2011
COMMUNITY HEALTH NURSING – II

Duration: 3 Hours

Total Marks: 75

- Instructions :*
- 1) Use blue/black ball point pen only.
 - 2) Do not write anything on the blank portion of the question paper. If written anything such type of act will be considered as an attempt to resort to unfair means.
 - 3) All questions are compulsory.
 - 4) The number to the right indicates full marks.
 - 5) Draw diagrams wherever necessary.

SECTION-I

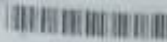
38 Marks

1. a) Discuss in brief the problem of non communicable diseases in India. 3
b) Explain factors associated with cancers. 4
c) As a District Public Health Nurse how will you organise cancer prevention/control programme for women. 5

12
2. a) List the problems of adolescent girls. 2
b) Explain the various programmes available for promotion of adolescent health. 4
c) Discuss role of a Community Health Nurse in prevention of HIV/AIDS in adolescents. 5

11
3. Write short answer on (any three) (3×5=15)
a) Elderly abuse
b) Disaster prevention in schools.
c) National vector borne disease control programme.
d) Strategies of National Rural Health Mission.
e) World Health Day Theme – 2010.

P.T.O.



54015

Final M.Sc. Nursing Examination, Summer 2017
COMMUNITY HEALTH NURSING – II

Total Duration : 3 Hours

Total Marks : 75

- Instructions :**
- 1) Use **blue/black** ball point pen only.
 - 2) Do not write anything on the **blank portion of the question paper**. If written anything, such type of act will be considered as an attempt to resort to unfair means.
 - 3) **All questions are compulsory**.
 - 4) The number to the **right** indicates **full marks**.
 - 5) Draw diagrams **wherever** necessary.
 - 6) Distribution of syllabus in Question Paper is only meant to cover entire syllabus within the stipulated frame. The Question paper pattern is a mere guideline. Questions can be asked from any paper's syllabus into any question paper. Students cannot claim that the Question is out of syllabus. As it is only for the placement sake, the distribution has been done.
 - 7) **Use a common answerbook for all sections.**

SECTION – I (38 Marks)

1. Long answer question : (3+4+5=12)
 - a) Define Epidemiology. 3
 - b) What are the emerging and re-emerging diseases ? 4
 - c) Discuss the role of a community health nurse in investigation of an epidemic. 5
2. Long answer question : (2+4+5=11)
 - a) Describe the aging process and the changes in geriatrics. 2
 - b) Enumerate the myths and facts of aging. 4
 - c) Explain about elderly abuse. 5
3. Short answer question (**any three** out of five) : (3x5=15)
 - a) National Integrated Disease Surveillance Program.
 - b) Global burden of disease.
 - c) Public relations.
 - d) Community based rehabilitation.
 - e) Health information system.

P.T.O.

Time	Purpose
6:00	Study
6:30	Study
7:00	Study
7:30	Study
8:00	Study
8:30	Study
9:00	Study
9:30	Study
10:00	Study
10:30	Study
11:00	Study
11:30	Study
12:00	Study
12:30	Study
1:00	Study
1:30	Study
2:00	Study
2:30	Study
3:00	Study
3:30	Study
4:00	Study
4:30	Study
5:00	Study
5:30	Study
6:00	Study

54011

SECTION - II

4. Long answer :

- a) Define administration. 17/19
- b) What are the principles and scope administration? 27
- c) Explain the organization and functions of nursing services and education at national level 544

12
3
4
5

5. Long answer :

- a) Explain the types and theories of organization. 69
- b) Explain the measures for organizing nursing services and patient care. 557

10
4
6

6. Write short answers on (any three) :

(3x5=15)

- a) NAAC
- ✓ b) Nursing regulatory mechanisms. 675
- c) Health economics. 617/618
- d) Use of computers in hospital and community.
- ✓ e) Stress management.

Use **blue/black** ball point pen only.

Do not write anything on the **blank portion of the question paper.**
If written anything...



54011

FINAL M.SC. NURSING (MEDICAL SURGICAL NURSING; CARDIO VASCULAR AND THORASIC NURSING, CRITICAL CARE NURSING, ONCOLOGY NURSING, NEUROSCIENCES NURSING, NEPHRO-UROLOGY NURSING, ORTHOPEDIC NURSING, GASTRO-ENTEROLOGY NURSING)(OBSTETRIC AND GYNAECOLOGICAL NURSING, PAEDIATRIC [CHILD HEALTH] NURSING, COMMUNITY HEALTH NURSING, MENTAL [PSYCHIATRIC] HEALTH NURSING), Winter-2013 Examination
NURSING ADMINISTRATION - I

Total Duration : 3 Hours

Total Marks : 75

- Instructions:
- 1) Use **blue/black** ball point pen only.
 - 2) **Do not** write anything on the **blank portion of the question paper.** If written anything, such type of act will be considered as an attempt to resort to unfair means.
 - 3) **All** questions are **compulsory.**
 - 4) The number to the **right** indicates **full** marks.
 - 5) Draw diagrams **wherever** necessary.
 - 6) Distribution of syllabus in Question Paper is only meant to cover entire syllabus within the stipulated frame. The Question paper pattern is a mere guideline. Questions can be asked from any paper's syllabus into any question paper. Students cannot claim that the Question is out of syllabus. As it is only for the placement sake, the distribution has been done.
 - 7) Use a common answerbook for all sections.

SECTION - I

38 Marks

(3+4+5=12)

1. LAQ

- a) Define leadership
- b) What are the types of leadership? *1+1*
- c) Explain the theories of leadership? *1+1*

3

4

5

(2+4+5=11)

2. LAQ

- a) Define nursing audit.
- b) Explain the audit cycle. *3+1+1*
- c) Enumerate the merits demerits of nursing audit. *2+2+1*

2

4

5

(3x5=15)

3. Brief answer question (**any three** out of five) :

- a) Group dynamics
- b) Consumer protection act.
- c) Occupational health and safety. *3+2*
- d) ABC analysis.
- e) Management by objectives.

(P.T.O.)



Final M.Sc. Nursing Examination, 2019
MATH NURS



54011

SECTION - II

37 Marks

4. Long answer- (3+4+5=12)
- a) Define law 3
 - b) Explain the ethical principles used in nursing. 4
 - c) Explain the issues in practice, education & administration in nursing 5
5. Long answer- (4+6=10)
- a) Define budget. Enumerate are the types of Budget? 4
 - b) Explain budget of college of nursing. 6
6. Brief answer question (any three out of five) : (3x5=15)
- a) Management by objectives
 - b) Quality assurance in nursing
 - c) Group dynamics
 - d) Health care delivery system in India
 - e) Computers in nursing education

3 Hours

- Instructions : 1) Use **blue/black** ball point pen only.
2) Do not write anything on the **blank portion of the question paper.**
If written anything, such type of act will be considered as an attempt to resort to unfair means.



Dhiraj

54011

Final M.Sc. Nursing (All Speciality) Examination, Summer 2016
NURSING ADMINISTRATION - I

Total Duration : 3 Hours

Total Marks : 75

- Instructions : 1) Use **blue/black** ball point pen only.
2) **Do not** write anything on the **blank portion of the question paper.**
If written anything, such type of act will be considered as an attempt to resort to unfair means.
3) **All questions are compulsory.**
4) The number to the **right** indicates **full marks.**
5) Draw diagrams wherever necessary.

SECTION - I (38 Marks)

(3+4+5=12)

1. Long Answer question :

Explain Controlling under following heads

- a) Define planning and control. 3
b) Write differences between operational and strategic planning. 4
c) Discuss planning process in health services. 5

(2+4+5=11)

2. Long Answer question :

Explain Leadership under following heads

- a) Define group dynamics. 2
b) Characteristics of effective leadership. 4
c) Explain the types of leadership and their merits and demerits. 5

(3x5=15)

3. Write Short Answers on (any three out of five) :

- a) Staff development programme.
b) Management by objectives.
c) ABC analysis.
d) Effective communication in ward management.
e) Disaster management.

54011

SECTION - II

4. Long answer :

- a) Define administration. 1919
- b) What are the principles and scope administration? 27
- c) Explain the organization and functions of nursing services and education at national level 544

12
3
4
5

5. Long answer :

- a) Explain the types and theories of organization. 69
- b) Explain the measures for organizing nursing services and patient care. 557

10
4
6

6. Write short answers on (any three) :

(3x5=15)

- a) NAAC
- ✓ b) Nursing regulatory mechanisms. 675
- c) Health economics. 617/618
- d) Use of computers in hospital and community.
- ✓ e) Stress management.



SECTION - II

4. L A Q

- a) Define budget.
- b) What are the types of budget? *any 4*
- c) Explain cost effectiveness and cost accounting *2.5/2.5*

5. L A Q

- a) Explain the legal issues in nursing.
 - b) Explain the professional responsibility and accountability *5+3*
6. Brief answer question (any three out of five) :
- a) Programme evaluation and review technique .(PERT)
 - b) Current trends and issues in nursing administration.
 - c) National population policy.
 - d) Condemnation.
 - e) Tele nursing.

Use **blue/black** ball point pen only.

Do not write anything on the back of the paper.

37 Marks



54011

Final M.Sc. Nursing (Common in All Final M.Sc. Nursing)
Examination, Winter 2012
NURSING ADMINISTRATION - I

Duration : 3 Hours

Total Marks : 75

- Instructions:**
- 1) Use **blue/black** ball point pen only.
 - 2) **Do not** write anything on the **blank portion of the question paper**. If written anything, such type of act will be considered as an attempt to resort to unfair means.
 - 3) **All** questions are **compulsory**.
 - 4) The number to the **right** indicates **full** marks.
 - 5) **Draw** diagrams **wherever** necessary.

SECTION - I

- | | |
|--|----------|
| 1. Long answer : | 12 |
| a) Define law. 476/475 | 3 |
| b) Explain the ethical principles. 505 | 4 |
| c) Explain the patient care issues and management issues in nursing. 490, 401, 492 | 5 |
| 2. Long answer : | 11 |
| a) Define communication. 120 | 2 |
| b) Explain the communication process. 120, 121 | 4 |
| c) Explain about public relation. | 5 |
| 3. Write short answers on (any three) : | (3x5=15) |
| a) Strategic planning. 50 | |
| b) National policy on AYUSH. 545 | |
| c) Disaster cycle. | |
| d) Collective bargaining. 33 | |
| e) Measures for infection control. | |

P.T.O.



Summer-2013 Examination



5401

5. Long Answer Question.

(4+6=10)

- a) Discuss records maintained in relation to patient care
- b) Discuss the scope of computer in nursing management

4
6

6. Brief answer question (any three out of five) :

(3x5=15)

- a) Factors leading to conflict, explain Stress Management.
- b) Effect of Collective bargaining on nursing care practices.
- c) Group dynamics.
- d) Discuss Critical thinking is necessary in decision making.
- e) Legal issues in nursing discuss with example.

INTERACT A...
121...
Nursing Exam...
ITY HEALTH...
ek ball point pen...
ything on the blam...
thing, such type of act...

Study...
Dist...
At...
D...
A...

Use blue/black ball point pen only.

Do not write anything on the blank portion of the question paper.

54011

Final M.Sc. Nursing (Common in All Final M.Sc. Nursing)
Examination, Winter 2012
NURSING ADMINISTRATION - I

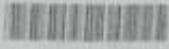
Duration : 3 Hours

Total Marks : 75

- Instructions: 1) Use blue/black ball point pen only.
2) Do not write anything on the blank portion of the question paper. If written anything, such type of act will be considered as an attempt to resort to unfair means.
3) All questions are compulsory.
4) The number to the right indicates full marks.
5) Draw diagrams wherever necessary.

SECTION - I

- | | |
|--|----------|
| 1. Long answer : | 12 |
| a) Define law. <i>1/2/12</i> | 3 |
| b) Explain the ethical principles. <i>1/2/12</i> | 4 |
| c) Explain the patient care issues and management issues in nursing. <i>1/2/12</i> | 5 |
| 2. Long answer : | 11 |
| a) Define communication. <i>1/2/12</i> | 2 |
| b) Explain the communication process. <i>1/2/12</i> | 4 |
| c) Explain about public relation. | 5 |
| 3. Write short answers on (any three) : | (3x5=15) |
| a) Strategic planning. <i>1/2/12</i> | |
| b) National policy on AYUSH. <i>1/2/12</i> | |
| c) Disaster cycle. | |
| d) Collective bargaining. <i>1/2/12</i> | |
| e) Measures for infection control. | |



SECTION - II

4. L A Q

- a) Define budget.
- b) What are the types of budget? *any 2*
- c) Explain cost effectiveness and cost accounting *2.5/2.5*

5. L A Q

- a) Explain the legal issues in nursing.
- b) Explain the professional responsibility and accountability *3+3*

6. Brief answer question (**any three** out of five) :

- a) Programme evaluation and review technique .(PERT)
- b) Current trends and issues in nursing administration.
- c) National population policy.
- d) Condemnation.
- e) Tele nursing.

Use **blue/black** ball point pen only.

Do not write anything on the **blank portion of the question paper**.
If written anything on the blank portion of the question paper, it will be considered as an attempt to resort to unfair means.



54011

FINAL M.Sc. NURSING (MEDICAL SURGICAL NURSING: CARDIO VASCULAR AND THORASIC NURSING, CRITICAL CARE NURSING, ONCOLOGY NURSING, NEUROSCIENCES NURSING, NEPHRO-UROLOGY NURSING, ORTHOPEDIC NURSING, GASTRO-ENTEROLOGY NURSING)(OBSTETRIC AND GYNAECOLOGICAL NURSING, PAEDIATRIC [CHILD HEALTH] NURSING, COMMUNITY HEALTH NURSING, MENTAL [PSYCHIATRIC] HEALTH NURSING), Winter-2013 Examination

NURSING ADMINISTRATION - I

Total Marks : 75

Total Duration : 3 Hours

- Instructions:
- 1) Use **blue/black** ball point pen only.
 - 2) Do not write anything on the **blank portion of the question paper**. If written anything, such type of act will be considered as an attempt to resort to unfair means.
 - 3) All questions are **compulsory**.
 - 4) The number to the **right** indicates **full marks**.
 - 5) Draw diagrams **wherever** necessary.
 - 6) Distribution of syllabus in Question Paper is only meant to cover entire syllabus within the stipulated frame. The Question paper pattern is a mere guideline. Questions can be asked from any paper's syllabus into any question paper. Students cannot claim that the Question is out of syllabus. As it is only for the placement sake, the distribution has been done.
 - 7) Use a common answerbook for all sections.

SECTION - I

38 Marks

(3+4+5=12)

1. L A Q
a) Define leadership 3
b) What are the types of leadership? 4
c) Explain the theories of leadership? 5
2. L A Q (2+4+5=11)
a) Define nursing audit. 2
b) Explain the audit cycle. 4
c) Enumerate the merits demerits of nursing audit. 5
3. Brief answer question (any three out of five) : (3x5=15)
a) Group dynamics
b) Consumer protection act.
c) Occupational health and safety 3, 3, 3
d) ABC analysis.
e) Management by objectives.

(P.T.O.)

2) Do not write anything on the blank portion of the question paper.



54011

Final M.Sc. Nursing Examination, Summer 2017
NURSING ADMINISTRATION - I

Total Duration : 3 Hours

Total Marks : 75

- Instructions :**
- 1) Use **blue/black** ball point pen only.
 - 2) Do not write anything on the **blank portion of the question paper**. If written anything, such type of act will be considered as an attempt to resort to unfair means.
 - 3) **All questions are compulsory**.
 - 4) The number to the **right** indicates **full marks**.
 - 5) Draw diagrams **wherever** necessary.
 - 6) Distribution of syllabus in Question Paper is only meant to cover entire syllabus within the stipulated frame. The Question paper pattern is a mere guideline. Questions can be asked from any paper's syllabus into any question paper. Students cannot claim that the Question is out of syllabus. As it is only for the placement sake, the distribution has been done.
 - 7) **Use a common answerbook for all sections.**

SECTION - I (38 Marks)

1. Long answer question : (3+4+5=12)
 - a) Define the term Material Management. 3
 - b) Explain the planning of equipments and supplies of an Intensive care unit. 4
 - c) Discuss the methods of Inventory Control in a Hospital. 5
2. Long answer question : (2+4+5=11)
 - a) Define the term Staffing. 2
 - b) Discuss the Recruitment Policy of a Teaching Institution. 4
 - c) Explain the factors influencing the Retention of Staff in a Hospital. 5
3. Short answer question (**any three** out of five) : (3×5=15)
 - a) Principles of Budgeting.
 - b) Decision Making.
 - c) Nursing Audit.
 - d) Legal Issues in Nursing.
 - e) Techniques of Performance Appraisal.

P.T.O.



Summer-2013 Examination



5401

5. Long Answer Question.

(4+6=10)

- a) Discuss records maintained in relation to patient care
- b) Discuss the scope of computer in nursing management

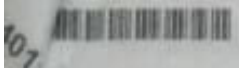
4

6

6. Brief answer question (any three out of five) :

(3x5=15)

- a) Factors leading to conflict, explain Stress Management.
- b) Effect of Collective bargaining on nursing care practices.
- c) Group dynamics.
- d) Discuss Critical thinking is necessary in decision making.
- e) Legal issues in nursing discuss with example.



Final M.Sc. Nursing (Common in All Final M.Sc. Nursing)
Examination, Summer 2012
NURSING ADMINISTRATION – I

Duration : 3 Hours

Total Marks : 75

- Instructions:**
- 1) Use **blue/black** ball point pen only.
 - 2) **Do not** write anything on the **blank portion of the question paper**. If written anything, such type of act will be considered as an attempt to resort to unfair means.
 - 3) **All** questions are **compulsory**.
 - 4) The number to the **right** indicates **full** marks.
 - 5) **Draw** diagrams **wherever** necessary.

SECTION – I

1. **Long answers :** **(3+4+5=12)**
 - a) Describe the concept of nursing management. 3
 - b) Enlist the principles of nursing management. 4
 - c) Discuss the current trends and issues in nursing administration. 5

2. **Long answers :** **(2+4+5=11)**
 - a) Define planning and control. 2
 - b) Write any three difference between operational and strategic planning. 4
 - c) Explain the planning process in health services. 5

3. **Write short answers (any three out of five) :** **(3×5=15)**
 - a) Decision making model
 - b) Staff development programme
 - c) Organizational structure
 - d) PERT
 - e) Collective bargaining.

P.T.O.